



Gulf Region

Notice to Fish Harvesters

LOBSTER FISHERY TRANSIT CORRIDORS TO ACCESS THE LOBSTER FISHING AREA (LFA) 25

Moncton, New Brunswick (NB) – July 31th, 2020 – Fisheries and Oceans Canada (DFO) is advising industry that for safety purposes, the two transit corridors that were created in 2017 have been widened. These corridors are open by Variation Order (VO) during the LFA 23 and LFA 24 closed season.

One corridor is located from Escuminac, NB in LFA 23 to the NB LFA 23/25 boundary line. The other corridor is located from Seacow Pond and Tignish, Prince Edward Island (PEI) in LFA 24 to the PEI boundary line of LFA 24/25. As in the past, this will allow fish harvesters to transport their catches through that area (transit corridor) to reach their homeport and avoid using the smack boat. A Vessel Monitoring System (VMS) is still required, at a reporting interval of every five minutes, if using the transit corridor.

The coordinates for the corridors are included in a VO and licence condition. The points references are based on the geodesic system North American Datum 1983 (NAD83) and positions are expressed in **Degrees, Minutes, Seconds (DMS)**. The coordinates and maps of the corridors, as well as the conversion to **Degrees, Decimal Minutes (DDM)** are provided below for your convenience (for reference only).

LFA 23 Corridor - Coordinates in NAD-83 (map on page 2)

Degrees, Minutes, Seconds (DMS) (in VO and licence conditions)

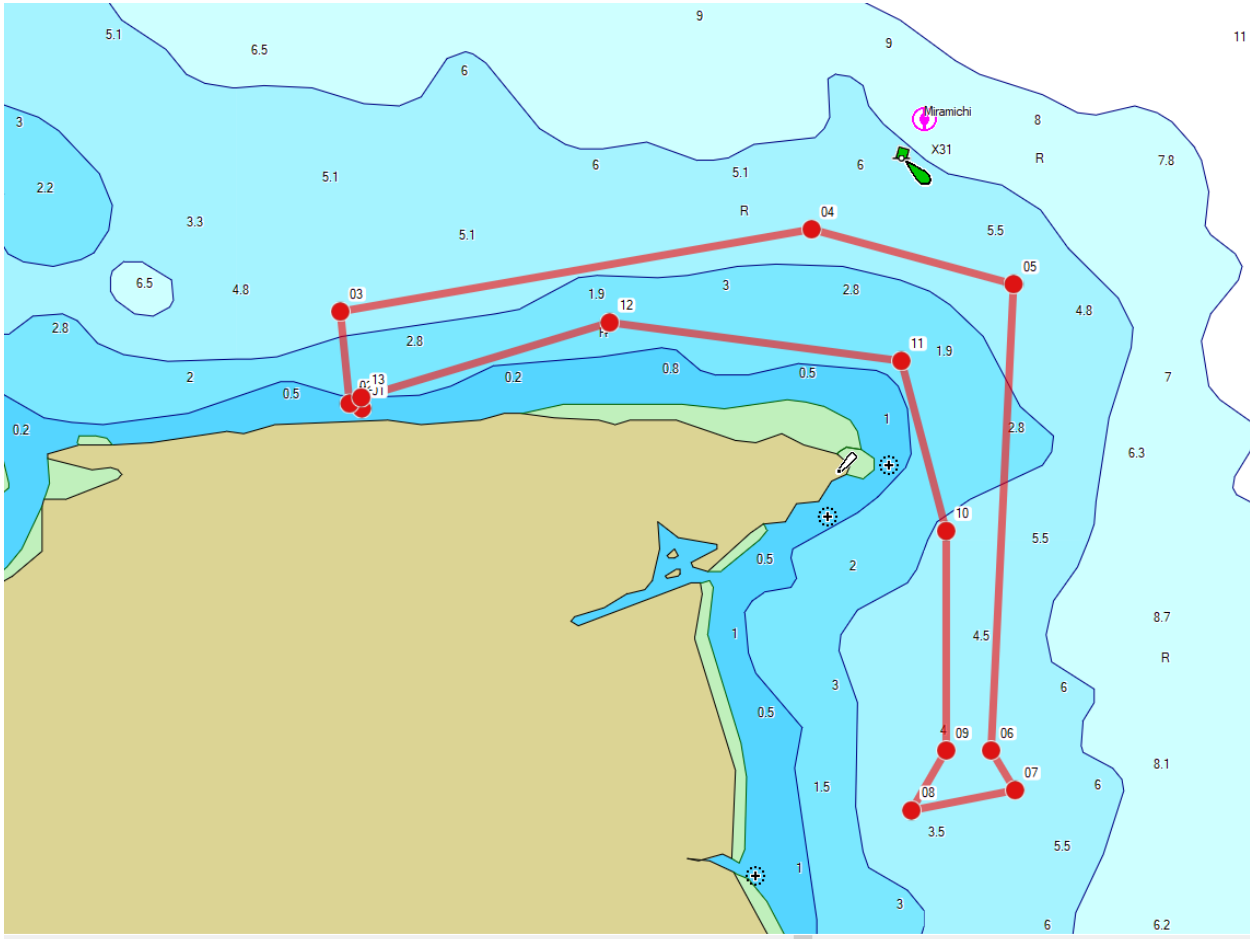
Pt.	Latitude - North	Longitude – West
1)	N47 04' 52.0"	W64 53' 15.6"
2)	N47 04' 54.7"	W64 53' 23.8"
3)	N47 05' 45.0"	W64 53' 30.0"
4)	N47 06' 30.0"	W64 48' 15.0"
5)	N47 06' 00.0"	W64 46' 00.0"
6)	N47 01' 45.0"	W64 46' 15.0"
7)	N47 01' 23.3"	W64 45' 59.0"
8)	N47 01' 12.2"	W64 47' 08.3"
9)	N47 01' 45.0"	W64 46' 45.0"
10)	N47 03' 45.0"	W64 46' 45.0"
11)	N47 05' 18.0"	W64 47' 15.0"
12)	N47 05' 39.0"	W64 50' 30.0"
13)	N47 04' 58.0"	W64 53' 16.0"

Degrees, Decimal Minutes (DDM) (conversion)

Pt.	Latitude - North	Longitude – West
1)	N47 04.867'	W64 53.260'
2)	N47 04.912'	W64 53.397'
3)	N47 05.750'	W64 53.500'
4)	N47 06.500'	W64 48.250'
5)	N47 06.000'	W64 46.000'
6)	N47 01.750'	W64 46.250'
7)	N47 01.388'	W64 45.983'
8)	N47 01.203'	W64 47.138'
9)	N47 01.750'	W64 46.750'
10)	N47 03.750'	W64 46.750'
11)	N47 05.300'	W64 46.250'
12)	N47 05.650'	W64 47.500'
13)	N47 05.967'	W64 50.267'

.../2

LFA 23 Corridor – Map (coordinates on page 1)



LFA 24 Corridor - Coordinates in NAD-83 (map on page 3)

Degrees, Minutes, Seconds (DMS)
(in VO and licence conditions)

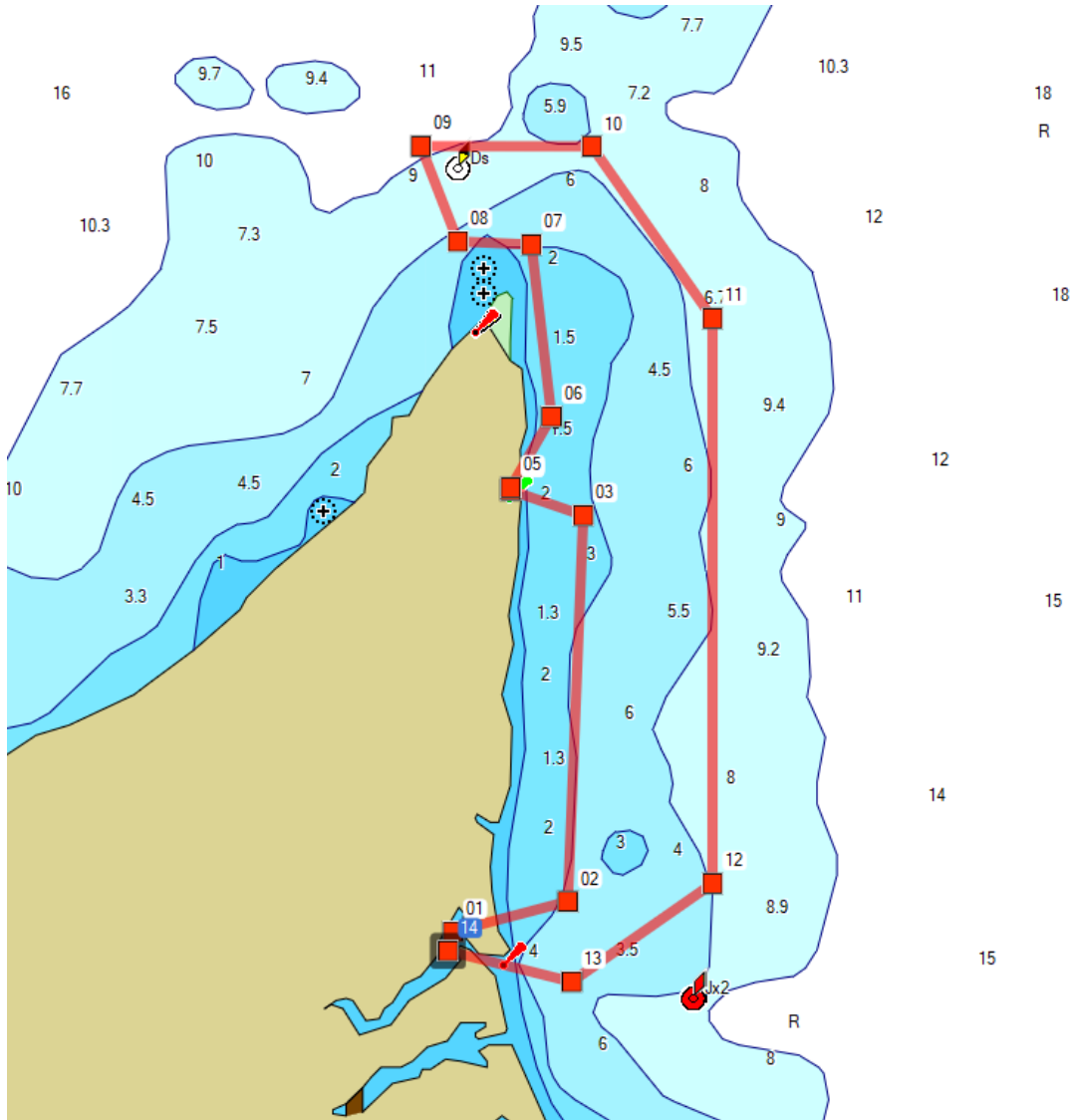
Pt.	Latitude - North	Longitude - West
1)	N46 57' 15.6"	W64 00' 13.4"
2)	N46 57' 34.0"	W63 58' 47.8"
3)	N47 01' 29.7"	W63 58' 36.4"
4)	N47 01' 45.0"	W63 59' 30.6"
5)	N47 01' 46.7"	W63 59' 30.5"
6)	N47 02' 30.0"	W63 59' 00.0"
7)	N47 04' 15.0"	W63 59' 15.0"
8)	N47 04' 16.9"	W64 00' 09.8"
9)	N47 05' 15.1"	W64 00' 37.4"
10)	N47 05' 15.0"	W63 58' 30.0"
11)	N47 03' 30.0"	W63 57' 00.0"
12)	N46 57' 45.0"	W63 57' 00.0"
13)	N46 56' 45.0"	W63 58' 45.0"
14)	N46 57' 03.8"	W64 00' 17.1"

Degrees, Decimal Minutes (DDM)
(conversion)

Point	Latitude - North	Longitude - West
1)	N46 57.260'	W64 00.223'
2)	N46 57.567'	W63 58.797'
3)	N47 01.495'	W63 58.606'
4)	N47 01.750'	W63 59.511'
5)	N47 01.778'	W63 59.508'
6)	N47 02.500'	W63 59.000'
7)	N47 04.250'	W63 59.250'
8)	N47 04.282'	W64 00.163'
9)	N47 05.251'	W64 00.623'
10)	N47 05.250'	W63 58.500'
11)	N47 03.500'	W63 57.000'
12)	N46 57.750'	W63 57.000'
13)	N46 56.750'	W63 58.750'
14)	N46 57.064'	W64 00.286'

.../3

LFA 24 Corridor - Map (coordinates on page 2)



FOR MORE INFORMATION:

Ben Moore
Resource Management (PEI Area)
Fisheries and Oceans Canada
Charlottetown , PEI
902-566-7933
Benjamin.Moore@dfo-mpo.gc.ca

Sandra Comeau
Resource Management (Eastern NB Area)
Fisheries and Oceans Canada
Tracadie, NB
506-395-7740
Sandra.Comeau@dfo-mpo.gc.ca

Josiane Massiéra
Resource Management (Gulf Region)
Fisheries and Oceans Canada
Moncton, NB
506-851-7290
Josiane.Massiera@dfo-mpo.gc.ca